

Ασκήσεις γραφής-σι λα σολ

# Ασκήσεις γραφής-σι λα σολ

σι

10

λα

20

σολ

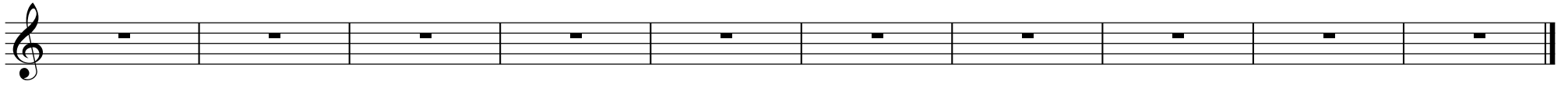
30

45

60

The image displays a musical exercise in 4/4 time, consisting of six staves. The first staff, labeled 'σι' (si), contains eight measures of quarter notes ascending from G4 to E5. The second staff, labeled 'λα' (la), contains ten measures of quarter notes ascending from D4 to A4, with the final measure being a whole rest. The third staff, labeled 'σολ' (sol), contains ten measures of quarter notes ascending from F3 to D4, with the final measure being a whole rest. The fourth, fifth, and sixth staves are empty, each beginning with a measure number (30, 45, and 60 respectively) and containing whole rests for the remaining measures of the exercise.

71



[Unnamed (treble staff)]

 $\lambda\alpha$  $\sigma\theta\lambda$ 

52